

**Shri Yogeshwari Education Society's**



**Swami Ramanand Teerth Mahavidyalaya,  
Ambajogai**



NAAC Re-accredited 'B+' with CGPA 2.68

(Affiliated to Dr. Babasaheb Ambedkar Marathwada University, Aurangabad)

**INTERNAL QUALITY ASSUARANCE CELL**

**Academic Year 2020-21**

## **7.1.5 Green Campus Initiatives**

**Circulars for Implementation  
of Green Campus Initiatives**

## **Green campus initiatives include :-**

**7.1.5.1. The institutional initiatives for greening the campus are as follows:**

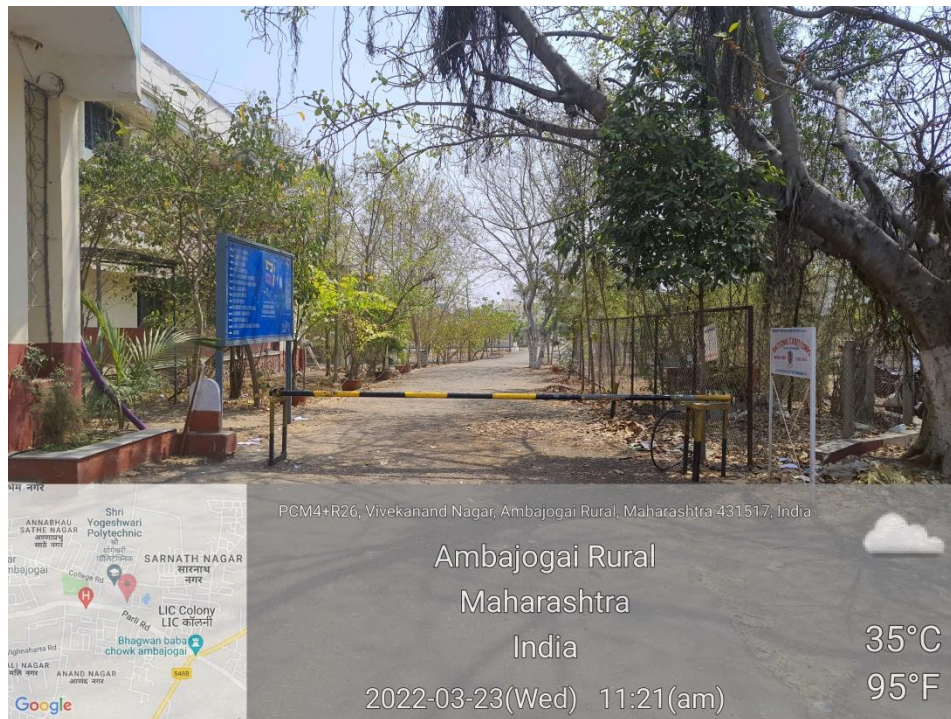
1. Restricted entry of automobiles
2. Use of Bicycles/ Battery powered vehicles
3. Pedestrian Friendly pathways
4. Ban on use of Plastic
5. landscaping with trees and plants

Green campus is the prime agenda of the college which shows remarkable awareness in maintaining an eco-friendly campus. Tree plantation, ban on use of plastic, maintaining the lawns, use of bicycles, pedestrian friendly pathways, no smoking campus, solar water heaters, uses of LEDS, digital library, rain water harvesting, paperless office are the major green initiatives taken by the college.

## INSTITUTIONAL INITIATIVES: -

### 1. RESTRICTED ENTRY OF AUTOMOBILES

The college encourages to the students and staff members who commute from nearby villages to use the public transport instead of their own vehicles for safety, security, fuel conservation and to reduce environmental pollution. Ambajogai is a small tehsil place so, college motivates students and staff members to come by walk or do the minimum use of vehicles. The vehicles owned by faculty or students with pollution check stickers are permitted into the campus. No vehicle day is celebrated in college premises once in a month.



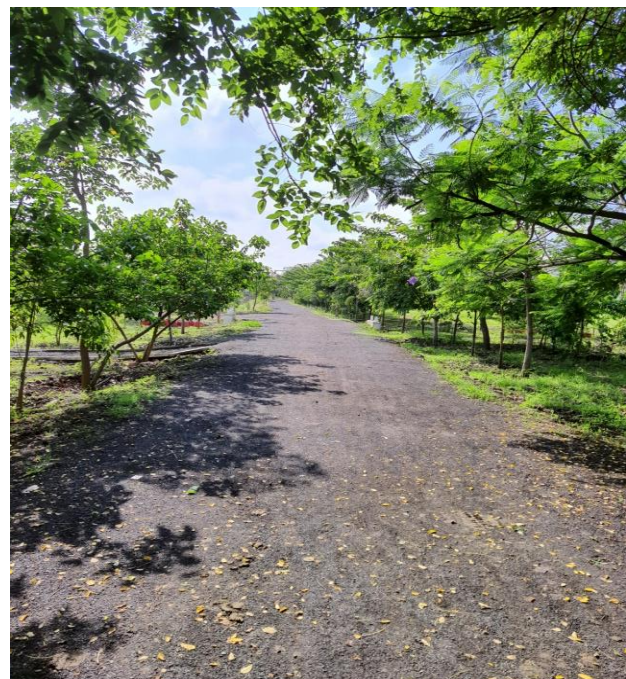
### 2. USE OF BICYCLES

The students staying in Ambajogai are encouraged to use bicycles for coming to college. Most of the Students and non-teaching staff coming from nearby villages prefer bicycles as a mode of transport for attending the college. This move can prevent the pollution and helps to keep campus environment friendly.



### **3. PEDESTRIAN FRIENDLY PATHWAYS**

The vehicle parking slot has been allotted at the main entrance of the college campus which leads to keep campus vehicle free with some exceptions. Pedestrian friendly pathways are used by students and staff. Trees are planted in line and solar lights are installed on internal roads which are properly maintained by the campus beautification committee.



#### **4. BAN ON USE OF PLASTIC**

College organizes different orientation programs for ensuring plastic free environment in the campus. Single-use plastic items such as plastic bottles, bags, spoons, straws and cups are banned and display boards are fixed at various places in the campus. The staff and students are informed to use metal water bottles instead of plastic bottles. Dustbins are installed on campus to collect plastic for careful disposal.

#### **5. LANDSCAPING WITH TREES AND PLANTS**

The college planted number of trees and plants in the campus to make the environment pollution free campus. The lawns and the trees provide shade and beautiful ambience. Landscaping and greenery in the campus is well maintained by support staff and Campus Beautification Committee.



